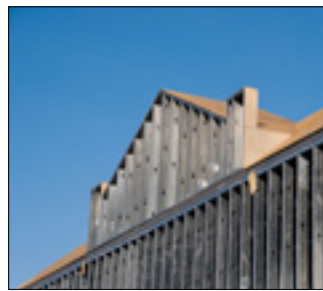
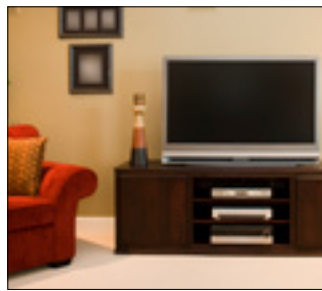
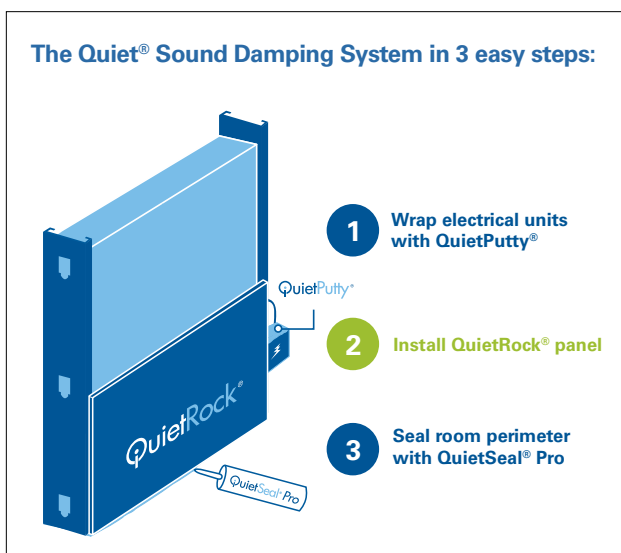


QuietRock® 510



The **LOWEST-COST SOLUTION** for Remodels & Commercial Applications

1/2" QuietRock® 510 is designed to improve Sound Transmission Class (STC) performance at an entry level price. QuietRock® 510 is an excellent choice for boosting STC ratings in remodeling, rehab, and new construction projects where 1/2" panel thickness is desired. QuietRock® 510 installs and finishes like standard drywall, requiring no special tools or training to use.



QuietRock® 510 Benefits

- Great value, offering solid performance at the lowest cost on the market
- Delivers STC ratings of 47-52
- UL classified in select fire rated assemblies
- Ideal for remodels and upgrades – installs over existing drywall, with no demolition¹
- Continues to reduce noise even when fixtures are installed, such as shelves or lamps
- Only 1/2" thick
- Outperforms other sound damping methods, including soundboard and resilient channel
- Patented technology

¹ Not recommended for ceiling applications as a face layer

QuietRock® 510



1/2" low cost sound damping gypsum panel – ideal for installation in residential and remodeling applications. Installs similar to standard gypsum panels, no special tools required.

Product Specifications:

- Thickness:** 1/2" (12.7mm), tapered edges
- Width:** 4' (1220mm)
- Lengths:** 8' (2438mm), 9' (2743mm), 10' (3048mm), 12' (3658mm)
- Weight:** 2.13 lbs/sqft
- STC-rated Assemblies (per ASTM E 90):** 47-52
- Flame Spread (per ASTM E 84):** Class A
- Product Standards:** C1766
- Installation Standards:** ASTM C 840; GA-214, GA-216

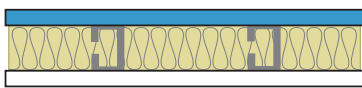
UL Assembly:

QuietRock® 510 is approved for use as an additional layer on one or both sides of the U300, U400, V400 and W400 wall designs as the face layer or attached to the studs. QuietRock® 510 is approved for use as an additional layer in the L500 and M500 series floor/ceiling assemblies.¹ QuietRock® 510 panel not evaluated nor intended as a substitute for the required layer(s) of UL Classified Gypsum Board in the above listed designs.

Common Wall Assemblies:

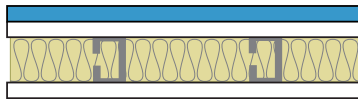
Single Light Gauge Steel Frame Walls

STC 50: 3-5/8" 25 ga. Steel Studs, 24" o.c.



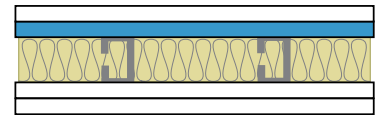
1/2" QuietRock® on one side,
1/2" Gypsum on the other

STC 54: 3-5/8" 25 ga. Steel Studs, 24" o.c.



1/2" QuietRock® over Type X on one side,
Type X on the other

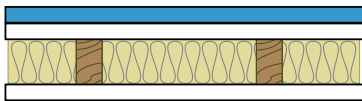
STC 57: 3-5/8" 25 ga. Steel Studs, 24" o.c.



Type X over 1/2" QuietRock® on one side,
Type X over Type X on the other

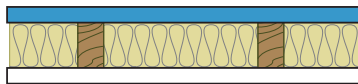
Single Wood Frame Walls

STC 47: Single 2x4 wood studs, 24" o.c.



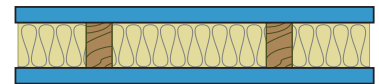
1/2" QuietRock® over 1/2" Gypsum on one side,
1/2" Gypsum on the other

STC 49: Single 2x4 wood studs, 24" o.c.



1/2" QuietRock® on one side,
1/2" Gypsum on the other

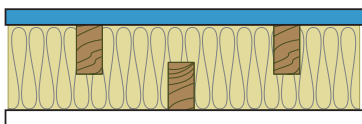
STC 52: Single 2x4 wood studs, 24" o.c.



1/2" QuietRock® on both sides

Other Wood Frame Walls

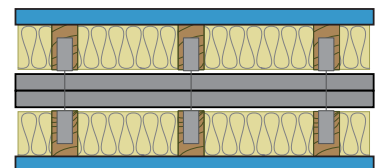
STC 54*: Staggered 2x4 wood studs, 8" o.c.



1/2" QuietRock® on one side
1/2" Gypsum on the other

Visit www.QuietRock.com for additional assemblies and technical information

STC 69: Double 2x4 wood studs, 16" o.c.



QuietRock® on both outer walls
1" fire-shield shaft liner material both sides

* Estimated STC based on independent laboratory testing

¹ For use as a base layer in multi-layer ceiling applications only

The information contained in this document is for general purposes only. Features and specifications are subject to change. The diagrams and stated STC ratings are intended to serve as a guide. Construction practices have an influence on final STC ratings. PABCO® Gypsum cannot guarantee actual STC ratings. Flanking sound patterns, the integrity of the wall, and construction methods factor in effective sound control. Exposure to excessive or continuous moisture and extreme temperatures of 125°F (52°C) or more should be avoided. QuietRock® panels should be stored flat in a dry area, under cover, on supported risers to prevent damage to product. Proper care should be taken while transporting, storing, applying and maintaining QuietRock® panels.



PABCO® Gypsum | 37851 Cherry Street, Newark, CA 94560 | 1.800.797.8159 | www.PabcoGypsum.com | www.QuietRock.com | PN: 101-00017-021418
 © 2018 PABCO® Gypsum. All rights reserved. PABCO® Gypsum, the PABCO® logo, EZ-SNAP®, Quiet®, QuietRock®, QuietPutty®, QuietSeal® Pro, QuietSeam®, QuietGlue® Pro, and QuietCoat® are trademarks or registered trademarks of Pacific Coast Building Products, Inc. and licensed to PABCO® Gypsum in the United States and other countries. Information subject to change without notice. QuietRock® 510 is covered by U.S. patent number 7,799,410 and 7,883,763.