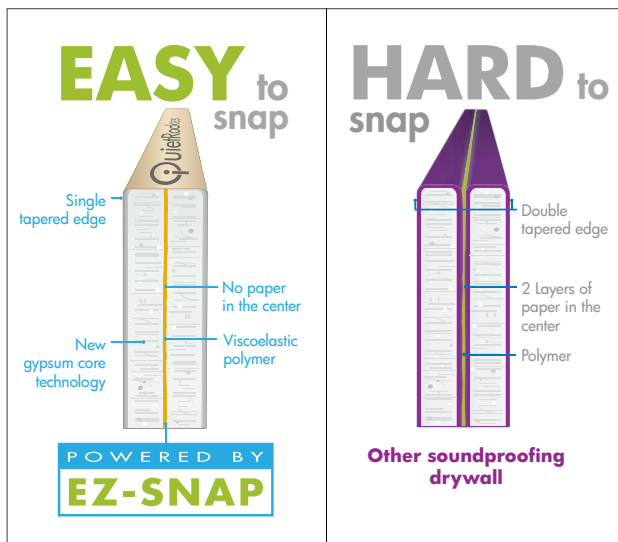


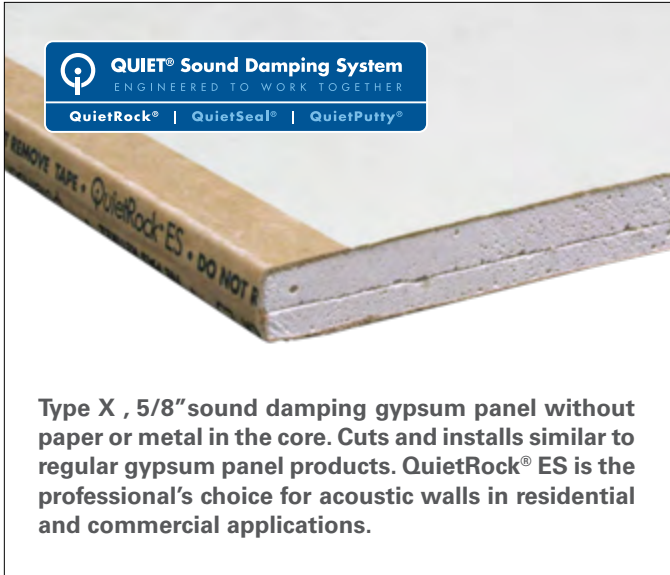
## Low cost, true score and snap with **EZ-SNAP®** technology

QuietRock® ES is the first sound reducing drywall that easily scores and snaps using breakthrough EZ-SNAP® technology. QuietRock® ES has no paper and no metal on the inside of the panel yet delivers acoustical ratings on single stud construction. This patented product is easier to install and is less expensive than any other sound reducing drywall and is ideal for residential and commercial construction.



### QuietRock ES Benefits

- Powered by EZ-SNAP® for true score and snap
- Easier to snap than other acoustical drywall
- Installs quickly for increased productivity and lower labor costs
- Maximizes usable floor space by using just a single layer
- Outperforms other sound isolation methods, including soundboard and resilient channel
- High reliability: unlike resilient channel, cannot be easily short circuited
- Abrasion resistant paper



**Type X, 5/8" sound damping gypsum panel without paper or metal in the core. Cuts and installs similar to regular gypsum panel products. QuietRock<sup>®</sup> ES is the professional's choice for acoustic walls in residential and commercial applications.**

## Product Specifications:

- Thickness:** 5/8" (15.9mm), tapered edges
- Width:** 4' (1220mm)
- Lengths:** 8' (2438mm), 9' (2743mm), 10' (3048mm)
- Weight:** 2.6 lbs/sqft
- STC-rated Assemblies (per ASTM E 90):** 48-60
- Fire-rated (per ASTM E 119, UL263):** 1 hour, Type X
- Flame Spread (per ASTM E 84):** Class A
- Product Standards:** ASTM C 1396
- Installation Standards:** ASTM C 840; GA-214, GA-216

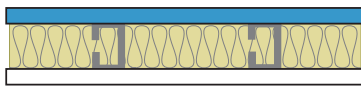
**UL Assembly:**  

Approved for use in many one and two hour fire-rated assemblies including U305, U309, U340, U341, U376, U386, U425, U465, V419, V463, V464, W313, W317, W459, and W460. Go to [www.QuietRock.com](http://www.QuietRock.com) for additional information on fire-rated assemblies. QuietRock<sup>®</sup> ES can be incorporated in several one and two-hour fire-rated UL designs. However, it is not intended as a direct substitute for a UL Classified Gypsum Board in all fire assemblies. Refer to the specific UL designs for assembly details.

## Common Wall Assemblies:

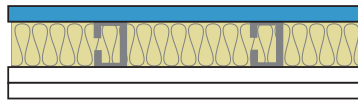
### Light Gauge Steel Stud Walls

Single 3 5/8" Steel Stud Wall, 24" OC - **STC 55**



QuietRock<sup>®</sup> on one side,  
Type X on the other

Single 3 5/8" Steel Stud Wall, 24" OC - **STC 60**

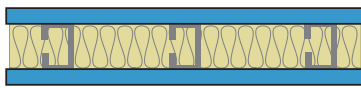


QuietRock<sup>®</sup> on one side,  
2 layers 5/8" Type X on the other

Visit [www.QuietRock.com](http://www.QuietRock.com) for additional assembly and technical information

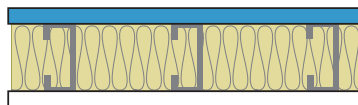
### Heavy Gauge Steel Stud Walls

3-5/8" Single Steel Stud Wall, 16" OC - **STC 48**



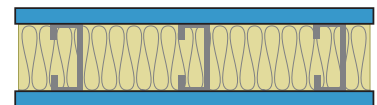
QuietRock<sup>®</sup> on both sides

6" Single Steel Stud Wall, 16" OC - **STC 49**



QuietRock<sup>®</sup> on one side,  
Type X on the other

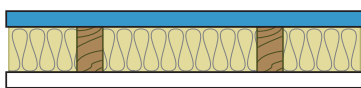
6" Single Steel Stud Wall, 16" OC - **STC 53**



QuietRock<sup>®</sup> on both sides

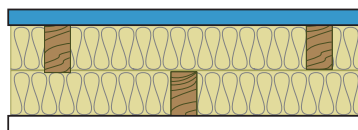
### Wood Stud Walls

Single 2x4 wood studs, 24" OC - **STC 51**



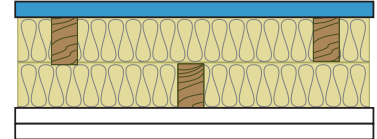
QuietRock<sup>®</sup> on one side,  
Type X on the other

Staggered 2x4 wood studs, 8" OC - **STC 55**



QuietRock<sup>®</sup> on one side  
Type X on the other

Staggered 2x4 wood studs, 8" OC - **STC 60**



QuietRock<sup>®</sup> on one side  
2 layers 5/8" Type X on the other

The information contained in this document is for general purposes only. Features and specifications are subject to change. The diagrams and stated STC ratings are intended to serve as a guide. Construction practices have an influence on final STC ratings. PABCO<sup>®</sup> Gypsum cannot guarantee actual STC ratings. Flanking sound patterns, the integrity of the wall, and construction methods factor in effective sound control. Exposure to excessive or continuous moisture and extreme temperatures of 125°F (52°C) or more should be avoided. QuietRock<sup>®</sup> should be stored flat in a dry area, under cover, on supported risers to prevent damage to product. Proper care should be taken while transporting, storing, applying and maintaining QuietRock.