

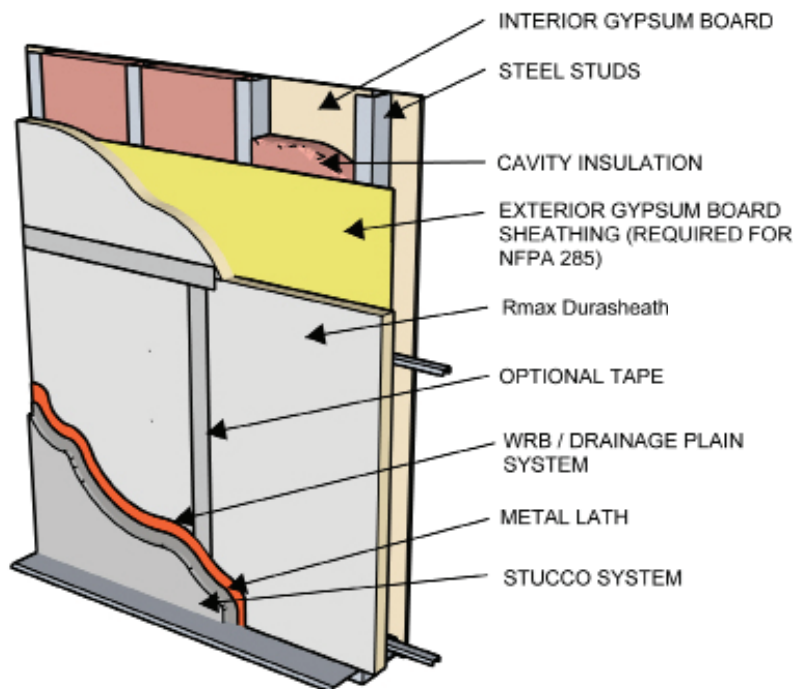
## DURASHEATH®

### EXTERIOR WALL APPLICATION (TYPE I-IV)

Rmax Durasheath® can be specified in exterior walls of buildings of any height utilizing brick veneer, stucco, limestone or natural stone veneer, cast artificial stone veneer, MCM, ACM, terracotta cladding, metal skin, cement board siding, stone/aluminum honeycomb composite panels, AAC panels or thin brick. Cladding attachment can be any standard installation technique, including open joint rainscreen systems.

Durasheath® has been tested per NFPA 285 and successfully passes with the exposed side facing the exterior. The NFPA 285 listing/approval is dependent on all components of the assembly. For a full explanation of approved assemblies and acceptable components, refer to Rmax Durasheath® NFPA 285 Assembly Guide. Third party evaluations and listings should also be consulted for specific instructions.

**Refer to Durasheath® Product Data Sheet for additional application/installation, compliances, thermal and physical properties, limitations and warnings.**



*Warranty: See Rmax "Sales Policy" for terms and conditions. Rmax does not assume any responsibility or liability for the performance of any products other than those manufactured by Rmax. **NOTE: Factory packaging should not be relied upon as protection at job sites or other outdoor storage locations. When short-term outdoor storage is necessary, take the following precautions: Store flat above ground on raised pallets, place bundles on finished surfaces, cover with a breathable tarpaulin and secure cover to prevent wind displacement.***



**BUILDING TRUST**



PRODUCT APPLICATION SHEET  
DURASHEATH®  
Revision.04-11-2023  
www.rmax.com  
(800) 527-0890