

Save time and money with a crack repair system that fully cures in 10 minutes!

Roadware 10 Minute Concrete Mender™

“The advanced concrete repair material that repairs concrete from the inside out.”

Now you can repair cracks and spalls to a smooth finish in a fraction of the time it takes with ordinary products. Roadware 10 Minute Concrete Mender™ is a revolutionary new two-part hybrid urethane for repairing concrete. It's nearly water thin for deep penetration and it won't pop out like epoxy because it never gets brittle.

NO WASTE APPLICATION

Roadware 10 Minute Concrete Mender™ is packaged in uniquely designed ratio-packs that completely mix the material at the point of application. No unused material. Difficult repairs are now simple, just clean the area, prime with 10 Minute Concrete Mender, add manufactured sand, and flood with additional 10 Minute Concrete Mender. In 10 minutes you'll get a tough 4500 psi polymer concrete that will stay in place permanently.

**Free Demonstration*
Call Today!**

ROADWARE 10 MINUTE CONCRETE MENDER™
Road-tough repairs for concrete floors, decks, slabs and surfaces.

DESCRIPTION: Roadware 10 Minute Concrete Mender is a two-part, hybrid urethane, cross-linked polymer concrete that cures in approximately 10 minutes from application at 70° F.

USES: Resealing cracks, spalls, and holes in concrete surfaces. Anchoring bolts and savings plan areas of other uses.

FEATURES: Extremely low viscosity for deep penetration. Forms a wide concrete range composition. Cures in 10 minutes with very little shrink. Safe to use.

BENEFITS: Long lasting repairs that won't pop out and peel out. Easy preparation. No shrinkage. Repairs may be opened to traffic immediately after application at 70° F.

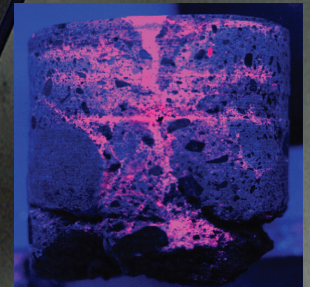
RECOMMENDED FOR NON-MOVEMENT REPAIRS: For Roadware 10 Minute Concrete Mender II.

FOR PROFESSIONAL USE ONLY: READ MSDS AND PRODUCT DATA SHEETS PRIOR TO USE.

FOR PRODUCT EMERGENCY EXPOSURE OR FILL LEAK: CONTACT CHEM-TEL: 800-258-8224

SAFETY GLASSES REQUIRED

Part Number 80300
300ml x 300ml Cartridge
(21 Fl Oz)



This concrete core sample shows the extent of penetration into concrete when photographed under UV light.

GREAT FOR ALL INDUSTRIAL FLOORS. Roadware 10 Minute Concrete Mender™ is extremely tough and will withstand even the harshest punishment. Great for freezers... may be applied at temperatures as low as -20° F with excellent results. High chemical resistance, perfect for containment areas. Re-coat in 10 minutes, will accept primers and industrial coatings in just 10 minutes after application. Now prep-work and coatings can be applied in the same day!



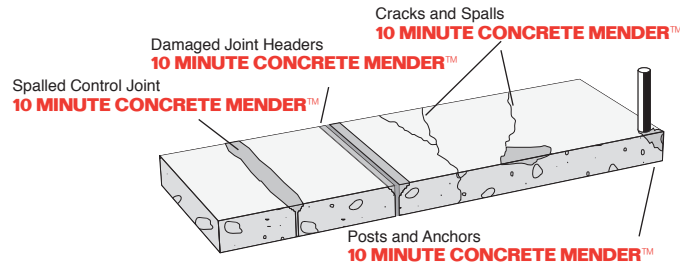
*Free in-floor demonstration valid for qualified customers from participating local distributors only. ©2010 Roadware Incorporated All rights reserved 05/2010

ROADWARE 10 MINUTE CONCRETE MENDER™

Large repairs are easy with Roadware 10 Minute Concrete Mender™



Roadware 10 Minute Concrete Mender™ is a two-part polyurethane that penetrates deep into concrete to make permanent repairs. At only 8.6 cps and a surface tension one third of water, Concrete Mender actually injects itself into the matrix of the concrete and shores up the existing concrete as well as making the repair. Concrete Mender eliminates the bond line with a process called Microdoweling™.



Roadware MatchCrete™ Concrete Mender is a two-part polyurethane with the exact same physical properties as Roadware 10 Minute Concrete Mender™ with the exception that it cures to a neutral off-white color. This allows the material to easily accept the color of the fill sand. For a wider range of colors, dry powdered pigments may be added to the sand as well.

Roadware MatchCrete™ Clear is a two-part aliphatic polyurethane for repairing cracks, spalls, and joints in concrete subject to UV exposure from sunlight. This material is clear in appearance when applied and cured. Colored sand and pigments may be added to create color stable repairs that match most any decorative or shade of concrete surface. MCC will not significantly change color with exposure to sunlight over time.

Roadware Flexible Cement II™, A moisture tolerant two part urethane used for repairing cracks and control joints subject to deflection, movement, and thermal expansion or contraction. Flexible Cement II is perfect for protecting control joints in new construction.



Roadware Incorporated
381 Bridgepoint Way
South Saint Paul, MN 55075
800-522-7623
www.concretemender.com

Locally available from: