

SCOFIELD® Formula One™

Polished Concrete System for Architectural Floors

■ Specification Guide ■



Henderson-Hopkins School

Superior Concrete Floor Protection with Proguard™

Protect your floor from the trades by using SCOFIELD® Proguard™ Duracover™. Proguard Duracover is a flexible, durable material that will protect interior flooring from harsh construction environments both before and after installation. More at www.scofield.com.

The SCOFIELD® Formula One Polished Concrete System delivers an attractive architectural floor that is both durable and low maintenance. This reference guide will help with the selection of the four primary components of a polished concrete floor: grade, class, color, and finish.

SCOFIELD® Formula One™

Polished Concrete System for Architectural Floors

1. Choose Grade

The **Grade** of your SCOFIELD® Formula One™ polished concrete floor refers to the depth of cut, or “grind” that is performed on the concrete. The deeper the cut, the more aggregate will be exposed. Floor or location characteristics may limit the depth of cut that may be performed.

■ GRADE 1

The SCOFIELD® Formula One™ Grade 1 floor typically exposes only the sand particles in the concrete. The Grade 1 finish is considered a “creamy looking” surface and has the most consistent appearance.



■ GRADE 2

The SCOFIELD® Formula One™ Grade 2 floor typically exposes a spattering of aggregate in the concrete. The Grade 2 finish is most often chosen to give the appearance of an aged surface.



■ GRADE 3

The SCOFIELD® Formula One™ Grade 3 floor typically exposes the greatest amount of larger aggregate in the concrete. The Grade 3 finish is most often chosen when the substrate has been seeded with custom aggregate.



2. Choose Class

The **Class** of your SCOFIELD® Formula One™ polished concrete floor refers to the level of polish that is performed on the floor. The higher the level of polish, the more glossy or shiny the floor will appear. Generally speaking, the higher the gloss, the more expensive the process will be.

■ CLASS 1

The SCOFIELD® Formula One™ Class 1 floor (specified as 400 grit) results in a surface that exhibits a low level of specular reflectivity. Simply put, this is the least shiny floor option.



■ CLASS 2

The SCOFIELD® Formula One™ Class 2 floor (specified as 800 grit) results in a surface that exhibits a moderate level of specular reflectivity. This floor will be reflective, but will not be “mirror-like”.



■ CLASS 3

The SCOFIELD® Formula One™ Class 3 floor (specified as 1500 grit) results in a surface that exhibits a high level of specular reflectivity and the most mirror-like surface.

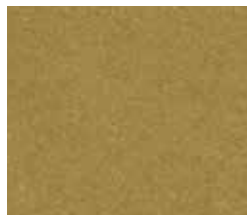


Polished Concrete Color

Compatible Dyes for Formula One™ Polished Concrete Floors

3. Choose COLOR!

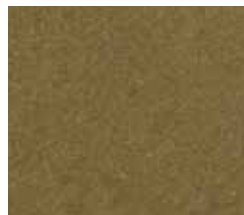
SCOFIELD® Formula One™ Liquid Dye Concentrate is a penetrating, translucent dye concentrate designed to color interior concrete surfaces prior to being sealed, densified, or polished. It is ideal for use on older interior concrete slabs, slabs where acid stain cannot be used, or areas that must be quickly returned to service. For projects where a natural concrete color is desired, G388 Soft Gray is recommended.



1435 Inca Gold



3935 Ponderosa



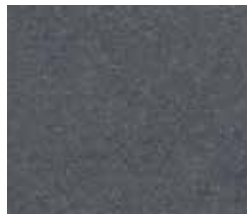
1335 Beach Sand



4405 Rustic Bark



2045 Georgia Clay



3055 Storm Cloud



1445 Cold Steel



2145 Grecian Gray



4915 Slash Pine



1330 Aquamarine



1385 Douglas Fir



5195 Snow Pea



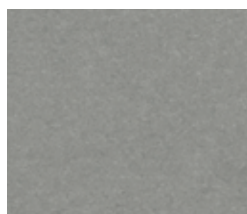
1995 Frost Green



1705 Emerald Green



1275 Bahama Blue



G388 Soft Gray



0510 Black



1255 Aztec Red



1245 Leather



6085 Winter Sunset



4135 Merlot



1395 Driftwood

Prior to beginning the job, consult the appropriate SCOFIELD Formula One Tech-Data sheets.

Polished Concrete Finishes

Densify, Enhance and Protect Your Formula One™ Floor

4. Choose Finish

■ **SCOFIELD® Formula One™ Lithium Densifier MP** is the bedrock of the Scofield Polished Concrete System. It is a penetrating, semi-transparent liquid that rapidly produces a terrazzo-like floor surface with improved abrasion resistance, greater gloss retention, higher surface compressive strength and reduced dusting. SCOFIELD® Formula One™ Lithium Densifier MP is a low VOC, cost-effective treatment that will extend the nominal service life of concrete floors, and reduce ongoing floor maintenance costs. Following the selection of grade, class, color, and SCOFIELD® Formula One™ Lithium Densifier MP, choose your finish option below:

■ **SCOFIELD® Formula One™ Guard-W** is used to guard and protect ground and polished concrete floors after treatment with **SCOFIELD® Formula One™ Lithium Densifier MP**.

It enhance the color, and provides a measure of protection against water intrusion.

SCOFIELD® Formula One™ Guard-W is the primary finish for the Scofield Formula One Polished Concrete System. Its organo-silicate hybrid composition combines the densifying and abrasion resistant properties of lithium silicate, with the stain blocking properties found only in self-crosslinking organic systems.



SCOFIELD® Formula One™ Guard-W's water-based finish was specially developed to enhance gloss, deliver a fast turnaround time, produce excellent reflective clarity, and provide for easier floor maintenance.

■ **SCOFIELD® Formula One™ Finish Coat** is used on ground and polished concrete floors after treatment with **SCOFIELD® Formula One™ Lithium Densifier MP** to reduce porosity and to protect the surface by improving chemical resistance and reducing water permeability.

SCOFIELD® Formula One™ Finish Coat is a VOC-free treatment that is nontoxic, easy to maintain, and environmentally sound, with a moderate sheen. SCOFIELD® Formula One™ Finish Coat does not contain sodium silicate or potassium silicate.

