



SikaCrete[®]-421 CI Rapid

**ONE-COMPONENT, EARLY STRENGTH-GAINING CONCRETE
CONTAINING FACTORY BLENDED COARSE AGGREGATE**

- High early strength
- Integral corrosion inhibitor
- Air-entrained
- Prepackaged coarse aggregate

Available in:
65 lb bag



SikaCrete[®]-421 CI Rapid

ONE-COMPONENT, EARLY STRENGTH-GAINING CONCRETE CONTAINING FACTORY BLENDED COARSE AGGREGATE

DESCRIPTION

SikaCrete-421 CI Rapid is a one-component, early strength-gaining concrete containing factory blended coarse aggregate. This concrete is air entrained and also contains a migrating corrosion inhibitor.

APPLICATIONS

- Full depth repairs.
- On grade, above, and below grade on concrete
- Horizontal surfaces
- Vertical and overhead surfaces when formed and pumped or poured
- Structural repair material for parking facilities, industrial plants, walkways, bridges, tunnel dams and balconies
- Filler for voids and cavities

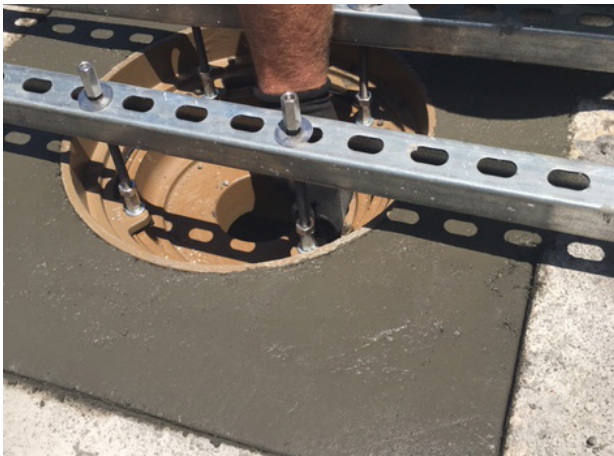
FEATURES AND BENEFITS

- Fast Setting
- Excellent workability & finishing characteristics
- 3,000 psi in 2 hours
- Pre-packaged coarse aggregate
- eliminates need to extend material in the field. Eliminates risk of reactive aggregate
- Single component: Just add water
- Contains corrosion inhibitor

TYPICAL DATA

Compressive Strength (ASTM C-39)	2 hours: 3,000 psi (20.7 MPa) 24 hours: 4,500 psi (31.0 MPa) 7 days: 6,000 psi (41.4 MPa) 28 days: 6,500 psi (44.8 MPa)
Splitting Tensile Strength (ASTM C-496)	28 days: 650 psi
Slant Shear (ASTM C-882 modified)	24 hours: 1,700 psi (11.7 MPa) 7 days: 2,300 psi (15.9 MPa) 28 days: 3,000 psi (20.7 MPa)
Length Change (Water Cured)	28 days: 0.012% change
Length Change (Air Cured)	28 days: -0.016%
Freeze Thaw Resistance (ASTM C-666)	300 Cycles: >90%
Chloride ion Permeability (ASTM C-1202)	28 Days: 600 C
Flexural Strength (ASTM C-293)	28 days: 1,000 psi (6.9 MPa)

*Mortar scrubbed into substrate



FOR MORE INFORMATION:

Contact Sika: Phone 800.933.SIKA(7452) Website: www.usa.sika.com

Sika Corporation
201 Polito Avenue
Lyndhurst, NJ 07071
Phone: 201-933-8800
Fax: 201-933-6225



BUILDING TRUST

