

Product Solutions for Material Handling Systems



(800) 999-5099
strongtie.com

In manufacturing and material handling applications, you want equipment that you can install easily with the benefit of future, no-hassle retrofit changes. Simpson Strong-Tie® meets and exceeds expectations with a variety of anchoring solutions to meet your immediate needs while providing flexibility for future modifications in the following areas:

Mechanical Anchor Solutions

Simpson Strong-Tie offers high-strength mechanical anchors that are tested to the most recent standards for performance and proven reliability. Simpson Strong-Tie also offers mechanical anchors with different corrosion-resistant properties for different environments made with various finishes including bright zinc, mechanically galvanized and stainless steel.

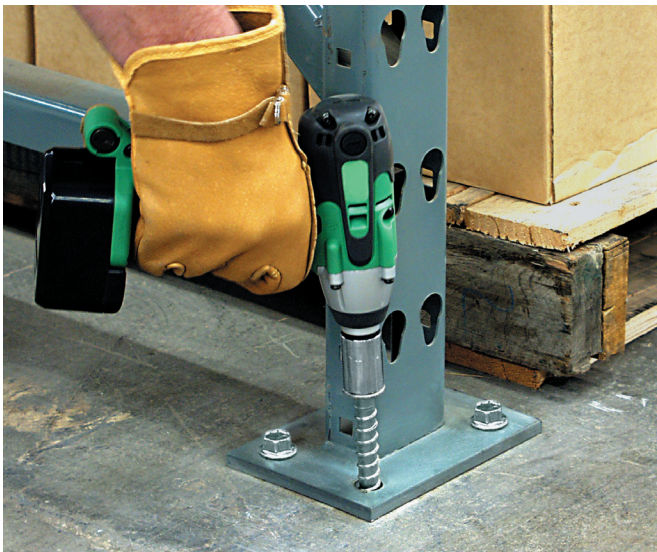
Titen HD® Heavy-Duty Screw Anchor

The Titen HD (THD) installs easily and offers industry-leading performance, even in seismic and vibratory conditions. This anchor is designed to undercut the concrete to efficiently transfer high loads, making it stronger than other anchor types. It also features these benefits for a superior installation experience:

- Fast and easy installation — Once the hole is drilled, drive the anchor through the fixture and you are done. No secondary setting operation required.
- Removable — Just back the anchor out and go. No stud to cut, torch or grind off, and nothing left behind.
- Less spacing and edge distance required — The THD does not exert expansion forces on the base material. This means anchors can be placed closer to each other or closer to the edge while maintaining performance.
- A variety of finished head styles available for different applications — Available in a finished hex head or countersunk head style suitable for applications that require a flush-mount profile eliminating unsafe tripping hazards. The countersunk head styles leave a more finished appearance and reduce damage to forklift wheels. The Simpson “#” and the anchor length are stamped into the head for easy verification.
- Pick the corrosion levels based on the installation environment — Zinc plated for interior or dry conditions, mechanically galvanized as well as Types 304 and 316 stainless steel for exterior use or highly-corrosive environments. Type 304 and Type 316 stainless steel available for exterior use or highly corrosive environments.
- Tested and approved for static, wind and seismic loading conditions for concrete and CMU installation (ESR-2713, ER-493 and ESR-1056).



Titen HD
Heavy-Duty Screw Anchor



Strong-Bolt® 2 Wedge Anchor

Code listed for cracked and uncracked concrete and masonry applications, the Strong-Bolt 2 wedge anchor is an optimal choice for high performance, even in seismic and high-wind conditions. The tri-segmented clip provides undercutting embossments on each clip segment to enable secondary expansion should a crack form and intersect the anchor location.

- Available in zinc-plated carbon steel and Type 304 and Type 316 stainless steel
- Chamfered top designed to prevent mushrooming during installation
- Qualified for minimum concrete thickness of 3 1/4"
- Code listed for use in cracked and uncracked concrete (ICC-ES ESR-3037)
- Code listed for CMU (IAPMO ER-240)



**Strong-Bolt 2
Wedge Anchor**

Anchoring Adhesive Solutions

Our versatile anchoring adhesives are ideal for a variety of anchoring applications. Our acrylic formulations offer all-weather performance and quick bolt-up times, while our adhesives offer unmatched strength at shallower embedments.



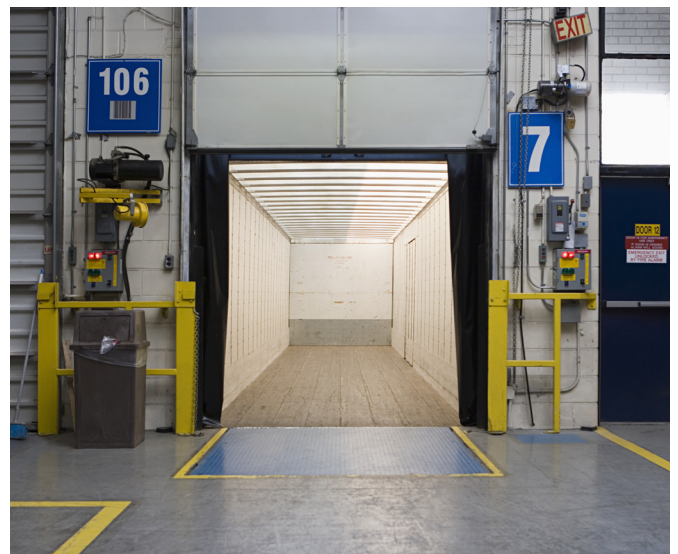
SET-3G™ High-Strength Epoxy Adhesive

- Highest strength epoxy for threaded rod and rebar, qualified per AC308
- Install in dry, water-saturated or water-filled holes in base materials with temperatures between 40°F–100°F (4°C–38°C)
- In service temperatures from –40°F–175°F
- Code listed for use in cracked and uncracked concrete and CMU (ICC-ES ESR-4057)



AT-XP® High-Strength, Fast-Cure, All-Weather Acrylic Adhesive

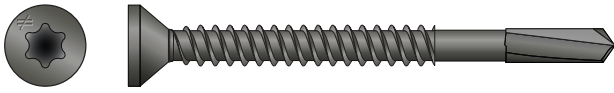
- Cures in one hour at 68°F; in 3 hours at 50°F
- For threaded rod and rebar, qualified per AC308
- Can be installed in cold temperatures as low as 14°F (–10°C)
- Dispenses easily in cold environments without needing to warm the cartridge
- Code listed for use in cracked and uncracked concrete (IAPMO UES ER-263)
- Code listed for CMU (IAPMO UES ER-281)



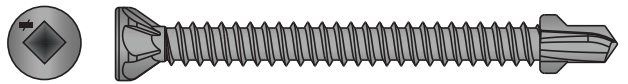
Fastener Solutions

In the fastener marketplace, Simpson Strong-Tie stands apart from the rest. Quality and reliability is our top priority. Each production run goes through rigorous testing to ensure our products can handle higher loads, resist corrosion, and make installation more efficient. From heavy-duty structural screws to our Quik Drive™ auto-feed screw driving systems to brads and staples, we have the ideal fastener for your application.

Wood-to-Steel



Strong-Drive® PPHD SHEATHING-TO-CFS Screw



CBSDQ SHEATHING-TO-CFS Screw

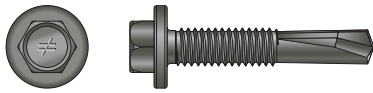


Strong-Drive TF WOOD-TO-STEEL Screw

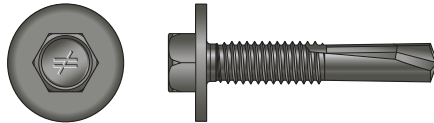


Strong-Drive TB WOOD-TO-STEEL Screw

Steel-to-Steel



Strong-Drive XM MEDIUM-HEAD METAL Screw



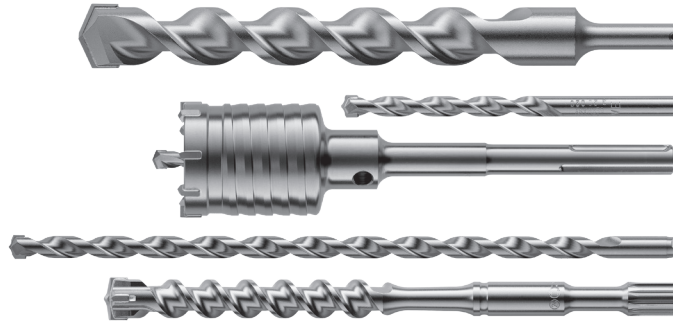
Strong-Drive XL LARGE-HEAD METAL Screw



Drill Bit Solutions

Whatever your drilling challenge, Simpson Strong-Tie has the bit for you. Our extensive line of high-quality carbide bits are designed to drill more holes in concrete and masonry than competitive bits.

- Manufactured in Germany to exacting quality standards
- SDS Plus, SDS Max and Spline shanks available
- Quad head bits available in SDS Max shank



Software Solutions



Anchor Designer™

Simpson Strong-Tie Anchor Designer Software is the latest anchorage design tool for structural engineers to satisfy their strength design provisions and methodologies. Anchor Designer will quickly and accurately analyze an existing design or suggest anchorage solutions based upon user-defined design elements in cracked and uncracked concrete conditions. The real-time design is visually represented in a fully-interactive 3D graphic user interface, supports imperial and metric-sized Simpson Strong-Tie mechanical and adhesive anchors, and offers cast-in-place anchor solutions.

Anchor Designer can calculate both single anchor solutions or multiple anchors in a single plate. Anchor locations are fully customizable to assist engineers in complex design conditions.

Features

- Design standards: ACI 318-14 Chapter 17 / ACI 318-11 Appendix D, CAN / CSA A23.3 Annex D, ETAG 001 Annex C or EOTA TR029
- Customizable anchor pattern
- Easy-to-use menus
- Ability to calculate single anchor model or multiple anchor models at once
- Multi-lingual language options include English, German, French, Spanish, Polish and Danish
- Rectangular, circular and L- and T-shape base plate geometries with the option to include slotted holes



Engineering Services

Our engineering and customer support services ensure that your solutions meet the unique design, delivery and installation needs of each project — every single time. Our high-performance, code-listed anchoring and fastening products are exhaustively tested both in our accredited labs and in third-party labs and field locations, assuring a high standard of strength, reliability and safety that you and your customers can depend on.

Locations

As a leader in innovation, research and testing, Simpson Strong-Tie is one of North America's largest suppliers of structural building products. With facilities from coast-to-coast and a distribution network that's second to none, we can have any product delivered onsite exactly when you need it.

