

# TRAFFIC DECK SYSTEM

## CONCRETE CURING & SEALING WATERPROOFING SYSTEM

SINAK Traffic Deck System is a spray applied, zero VOC, clear, curing & sealing system that protects new “green” concrete substrates to receive heavy pedestrian and vehicular traffic. The Traffic Deck System will provide a waterproof barrier within the treated concrete for a minimum period of 20 years from the date of application. The treated area is warranted against damage from water, freeze-thaw, salt, acid rain, hydrostatic pressure, osmotic pressure, chloride ion intrusion, surface deterioration and reinforcing steel corrosion. The Traffic Deck System consists of curing with SINAK LithiumCure 1000 and sealing with SINAK Sealer SG.

Traffic Deck System improves abrasion resistance, skid resistance, and enhances the durability of reinforced concrete. Substrates treated with Traffic Deck System are protected against water penetration, chloride intrusion, efflorescence, algae growth, mold, and staining from food, oil, & chemicals. Traffic Deck System is UV stable and will not yellow, peel, or degrade over time. Traffic Deck System is a permanent solution that saves significant time and labor during application in addition to reduced maintenance for the life of the treated surface. Traffic Deck System excels at protecting substrates that are expected to receive heavy vehicular traffic and extends the life of treated surfaces by decades.

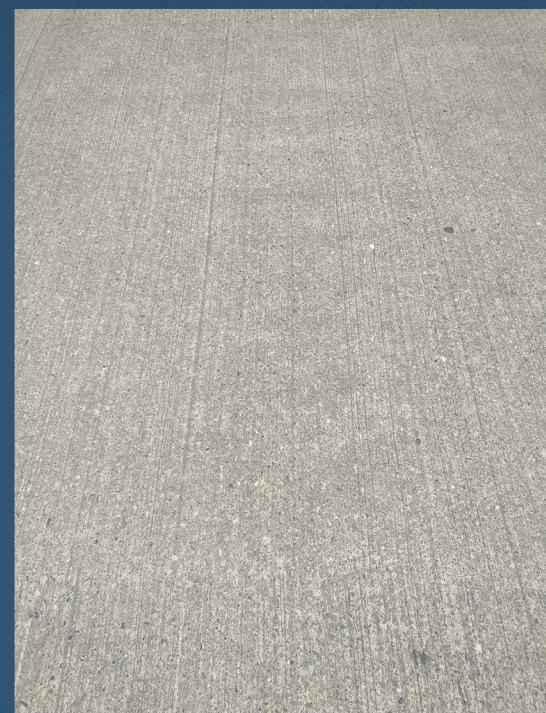
Traffic Deck System retains the natural appearance of treated substrates and does not alter the color or texture. Traffic Deck System is not a bond breaker and is compatible with line striping, joint sealants, patching materials, paint, and traffic coatings. Traffic Deck System is class 55 non-hazardous, non-toxic, and is listed as UL GREENGUARD Gold Certified, LBC Red List Free, Super Compliant with SCAQMD and Buy American Act compliant.

## FEATURES & BENEFITS

- 20-Year Waterproofing Warranty
- NSF-61 Potable Water Certified
- Zero VOCs
- UV Stable: Will not yellow
- Easy Spray Application
- Freeze-thaw Protection
- Chloride Ion Protection
- Superior stain protection
- Improves Abrasion Resistance
- Improves Skid Resistance
- Permanent Salt Guard
- Compatible with all paint, coatings, and adhesives
- Controls Hydrostatic and Osmotic Pressure
- Controls Efflorescence
- No Maintenance or Reapplication for the life of the concrete

## WHERE TO USE THE TRAFFIC DECK SYSTEM

- Vertical Cast in Place Concrete
- Horizontal Surfaces
- Below Grade
- Parking Structures
- Structural & Lightweight Concrete
- Pre-Cast Panels
- Concrete Pavement
- Garage Floors
- Podium Decks



The Traffic Deck System is specifically designed for projects with a goal of retaining the natural concrete appearance while offering permanent protection for the substrate.

## TESTING

### ASTM C-39 (Compressive Strength)

- Meets or exceeds 28-day water cure

### ASTM C-309/C-1315: TYPE 1 CLASS A (Moisture Retention)

- Exceeds water retention of less than 0.40 kg/m<sup>2</sup>

### ANSI/NSF 61 (Potable Water)

- Passed

### ANSI/NSF 372 (Potable Water- Lead Content)

- Passed

### ASTM C-642: (Density, Absorption and Voids Testing)

- 2.2% Improvement compared to 28-day water cured concrete

### ASTM C-666: (Freeze Thaw Resistance)

- 300 Cycles

- 0.51% Increase compared to 28-day water cured concrete

- 117.2% Improvement compared to 28-day water cured concrete

### ASTM C-672 : (Scaling Resistance)

- 0 Scaling after 50 Cycles

- 76.3% Increase compared to 28-day water cured concrete

### ASTM C-944: (Abrasion Resistance)

- 57% Improvement compared to 28-day water cured concrete

### ASHTO T 259/ T 260: (Chloride Ion Resistance)

- 40% Improvement compared to 28-day water cured concrete

## SUSTAINABLE DESIGN REQUIREMENTS

- Zero VOCs

- UL 2818 Gold - GREENGUARD® Gold Certified

- Environmental Product Declaration

- LBC Red List Free Declare Label

- Health Product Declaration

- Life Cycle Assessment

- Listed as Super-Compliant by the South Coast Air Quality - Management District (SCAQMD)

- Exceeds the regulatory limits in the SCAQMD Rule 1113

- Meets the requirements to contribute for LEED credit in the following areas: EQ Credit 1.0, 4.1 and 4.3, EQ Credit 10 3.1, MR Credit 5.1 and 5.2

## PRECAUTIONS

Do not allow LithiumCure 1000 or Sealer SG to come into contact with any glass, or metal. LithiumCure 1000 or Sealer SG left to dry on the surface may result in streaking, or whitening. Immediately wipe affected surfaces with a clean water-saturated cloth, then wipe dry with a second clean cloth. For questions regarding LithiumCure 1000 or Sealer SG contact SINAK.

### COVERAGE RATES (SUBJECT TO SURFACE FINISH) - LithiumCure 1000

Two-coat coverage rate is 200-250 sq ft per gallon (5-6 sq m per liter) for horizontal and vertical surfaces. Contact SINAK for additional information.

### INSTALLATION - LITHIUMCURE 1000

Installation should be continuous. LithiumCure 1000™ application should begin after the surface is firm enough to tolerate foot traffic or immediately after the early entry saw cutting. Apply a small test area to confirm penetration. If rain should occur at any time during this process, see *'Interrupted Installation'* at the end of this section.

1. Protect objects and areas not to be treated from spillage or overspray.
2. Apply first coat of LithiumCure 1000™ uniformly wetting the surface with an airless or tank-type sprayer.  
**DO NOT** allow LithiumCure 1000™ to puddle or flood the surface.
3. Immediately after the first coat is dry, apply a second coat. Drying time will vary from 10 to 30 minutes depending on temperature and environment. **NOTE:** "Dry" means dry to the touch.
4. Pay special attention to apply material in joints and on slab edges. Treatment of these areas will eliminate slab curl.
5. Clean all equipment with warm soapy water.

### VERTICAL CAST-IN-PLACE INSTALLATION

For vertical applications DO NOT allow the material to run down the surface. Areas that absorb at a higher rate should be treated with additional product.

### COVERAGE RATES (SUBJECT TO SURFACE FINISH) - Sealer SG

Two-coat coverage rate is 300 sq ft per gallon (7 sq m per liter) for horizontal and vertical surfaces. Contact SINAK for additional information

### INSTALLATION - SEALER SG - 5 Days After Application of LithiumCure 1000

Installation of Sealer SG may begin five days after application of LithiumCure 1000. Installation of Sealer SG should be continuous. Apply a small test area to confirm penetration. If rain should occur at any time during this process, see *'Interrupted Installation'* at the end of this section.

NOTE: The five day period is to maximize peak product performance. For full Warranty Coverage, the installation of Sealer SG MUST be completed 5 to 45 days after initial concrete installation. If the application of Sealer SG cannot be completed within 45 days of concrete installation, contact SINAK for additional information.

1. Protect objects and areas not to be treated from spillage or overspray.
2. Apply first coat of Sealer SG uniformly wetting the surface with an airless or tank-type sprayer.  
**DO NOT** allow Sealer SG to puddle or flood the surface.
3. Immediately after the first coat is dry, apply a second coat. Drying time will vary from 10 to 30 minutes depending on temperature and environment. **NOTE:** "Dry" means dry to the touch.
4. Pay special attention to apply material in joints and on slab edges. Treatment of these areas will eliminate slab curl.
5. Clean all equipment with warm soapy water.

### VERTICAL CAST-IN-PLACE INSTALLATION

For vertical applications DO NOT allow the material to run down the surface. Areas that absorb at a higher rate should be treated with additional product.

**INTERRUPTED INSTALLATION**

If the application should be interrupted by rain, mark the place of interruption and continue the application as soon as weather permits. If the delay exceeds 4 hours contact SINAK for technical support.

**HOT WEATHER INSTALLATION**

In hot (above 100°F or 38°C), dry and/or windy conditions contact SINAK for additional information.

**COLD WEATHER INSTALLATION**

Do not apply below 34°F (1°C). Allow ample time between coats for drying. Contact SINAK for additional information.

**STORAGE & HANDLING**

LithiumCure 1000 and Sealer SG have an infinite shelf life when stored in a cool dry area out of direct sunlight. Must be kept in tightly secured containers to prevent evaporation and contamination. LithiumCure 1000 and Sealer SG MUST be protected from freezing. Product that has frozen will not function as intended, and should be discarded.

**AVAILABILITY**

LithiumCure 1000 and Sealer SG are available in 1-gallon (3.78-liter) jugs, 5-gallon (18.9-liter) pails, 55-gallon (208.2-liter) drums and 275-gallon (1041-liter) totes.

**MAINTENANCE**

After applicaiton, no special maintenance is required.

**TECHNICAL ASSISTANCE**

Technical assistance is available from the manufacturer (800) 523-3147 [www.SINAK.com](http://www.SINAK.com).

**WARRANTY**

A 20-Year non-prorated materials warranty is available. Concrete must be placed in accordance with ACI manual section 302.1R-15. Contact SINAK for warranty requirements

SINAK Corporation warrants its products to be free from manufacturing defects and to meet the technical properties on the current product information sheet. To the maximum extent permitted by law, this express warranty and the remedies specified below are exclusive and in lieu of all other warranties and remedies. Any implied warranties including without limitation implied warranties of merchantability and fitness for a particular purpose are excluded. SINAK Corporation's liability under this product warranty shall be limited to a refund of purchase price or replacement of the product. SINAK Corporation shall have no liability for any loss of use, interruption of business, lost profits or goodwill, or for any special, incidental or consequential damages of any kind arising from the purchase or use of the warranted product, even if SINAK Corporation has been advised of the possibility of such loss, interruption or damage. This limited warranty may not be modified by representatives of SINAK Corporation, it's distributors or dealers. Any claim made under this warranty must be made within one(1) year of the date of purchase and shall be accompanied by any reports or test results that form the basis of the warranty claim. Prior to settlement of a warranty claim, SINAK Corporation shall have the right, but not the obligation, to conduct site inspections and perform tests pertaining to the customer's warranted product and it's manner of use.