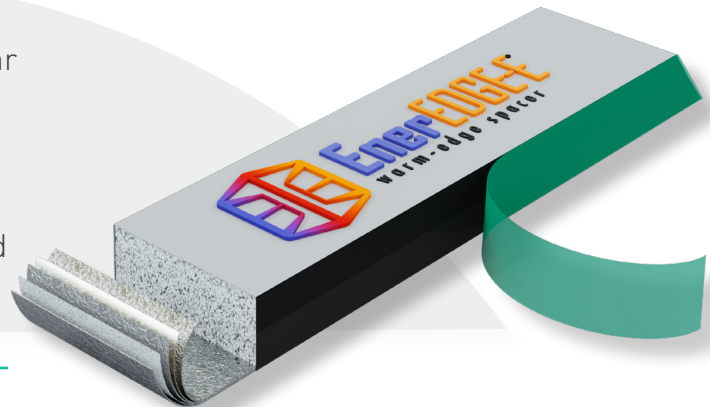


ENEREDGE® - E

Your inside edge to performance and savings

Product Overview

EnerEDGE®-E is a pre-desiccated, ready-to-apply, cellular EPDM warm-edge spacer that is suitable for a wide range of insulating glass constructions in fenestration applications. EnerEDGE-E spacer is inset and applied to a glass lite's perimeter to enable fabrication of dual and triple-glazed IG units in conjunction with a quality applied perimeter sealant.



Features & Benefits

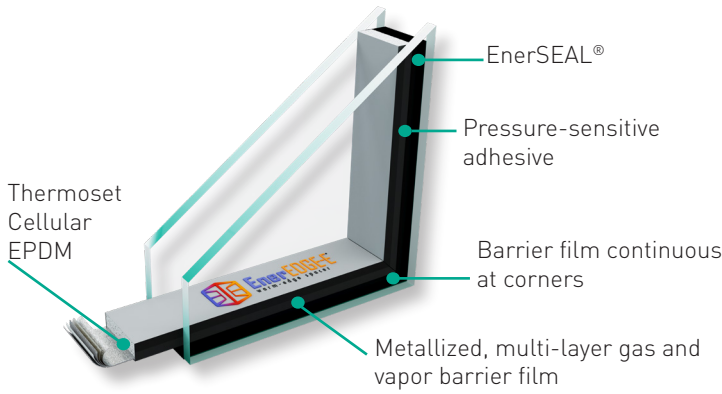
- Long-term durability
- Automation ready
- On-site technical assistance and training
- Dedicated team of glazing specialists who cater to the IG and residential window customer base

The Tremco Advantage

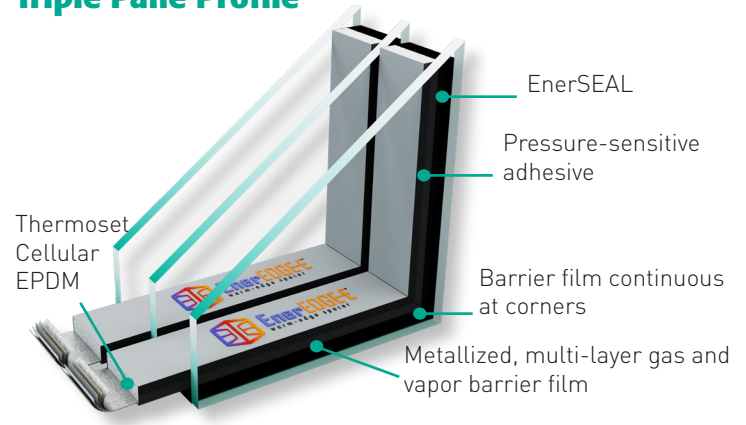
Backed by Tremco's exclusive 50-year fenestration industry expertise including all facets of the IG and window unit plus the window-to-wall installation connection – from spacers and gaskets to tapes and sealants. The only supplier in the IG space offering total building envelope protection with sealing solutions for every connection from the foundation to the roof.



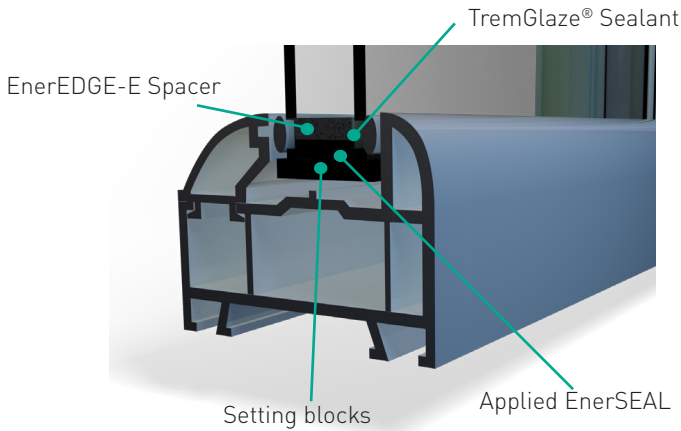
Double Pane Profile



Triple Pane Profile

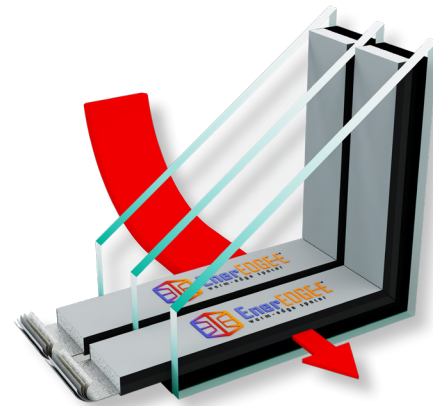


Window Profile



Heat Flow

Cellular EPDM Spacer Blocks Heat Loss



Colors	Black Dark Grey			
Height	Standard = 3/16" (4.8 mm)			
Spool Dimensions	Mini = 19.75" (50.1 cm)H x 19" (48.3 cm) W x 7.75" (19.7 cm) D			
	Auto = 26.125" (66.4 cm) H x 25" (63.5 cm) W x 13.5" (34.3 cm) D			
Air Spaces	3/16" (4.8 mm) 1/4" (6.4 mm) 9/32" (7.1 mm) 5/16" (7.9 mm) 11/32" (8.6 mm)	3/8" (9.7 mm) 13/32" (10.4 mm) 7/16" (11.2 mm) 15/32" (11.9 mm) 1/2" (12.7 mm)	17/32" (13.5 mm) 9/16" (14.2 mm) 19/32" (15 mm) 5/8" (15.9 mm) 21/32" (18.3 mm) 11/16" (17.5 mm)	23/32" (18.3 mm) 3/4" (19.1 mm) 25/32" (19.8 mm) 13/16" (20.6 mm) 7/8" (22.2 mm)

Tremco Commercial Sealants & Waterproofing | 3735 Green Road | Beachwood, OH 44122 | US: 800.852.9068 | CAN: 800.363.3213 | tremcosealants.com

Tremco Construction Products Group (CPG) brings together Tremco CPG Inc. and its Dryvit and Nudura brands; Willseal; Prebuck LLC; Tremco Barrier Solutions, Inc.; Weatherproofing Technologies, Inc. and its Pure Air Control Services and Canam Building Envelope Specialists offerings; and Weatherproofing Technologies Canada, Inc.



Construction Products Group

Use of the ® symbol indicates registration with the US Patent & Trademark Office and the Canadian Intellectual Property Office.
© Tremco CPG Inc. 2022

0922/EEESS

tremcocpg.com