

# TREMPROOF® TWS

Triple Waterproofing System (TWS) for  
Blindside and Underslab Applications

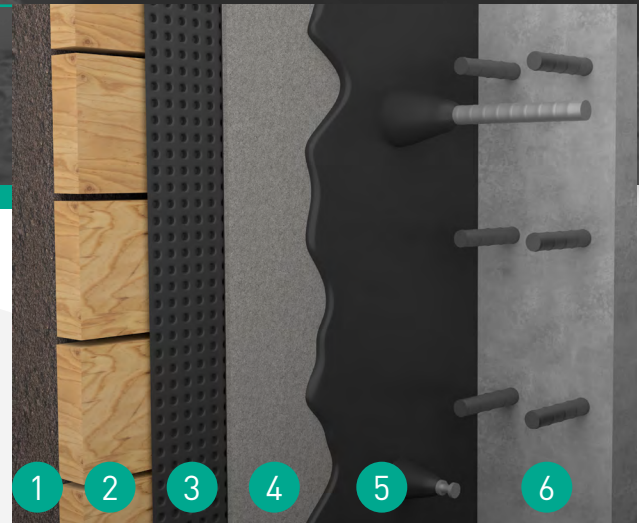
## System Overview

TREMProof® TWS is a blindside and underslab triple-layer waterproofing assembly consisting of 20 mils of HDPE, expandable granular bentonite and a protective layer of spun-bonded polyester, coated with 60 dry mils of polymer-enhanced, liquid-applied asphalt membrane.

This durable waterproofing system creates a physical bond to the concrete that eliminates the possibility of lateral water movement between the membrane and the structure. TWS provides superior defense against inclement weather conditions, preventing bentonite hydration prior to concrete placement.

## Features & Benefits

- Innovative triple-layer waterproofing assembly is tested per ASTM standards
- Protected bentonite allows for longer exposure to weather and construction elements
- Monolithic asphaltic membrane protects seams and seals penetrations, reducing time for detail work
- Exothermic reaction during concrete cure builds adhesion of the membrane to the structure, creating a bonded assembly
- Extreme durability and exceptional elongation and crack-bridging characteristics
- Compatible with many TREMProof, ExoAir® and TREMDrain™ solutions for a continuous envelope
- VOC compliant



## Components

- |   |                      |
|---|----------------------|
| 1 | Retained Earth       |
| 2 | Shoring              |
| 3 | TREMDrain™ Drainage  |
| 4 | Paraseal® System     |
| 5 | TREMProof 260        |
| 6 | Shotcrete / Concrete |

