



▲ Stone White



▲ Bone White



▲ Slate Gray



▲ Musket Gray



▲ Charcoal



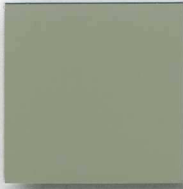
▲ Matte Black



▲ Almond



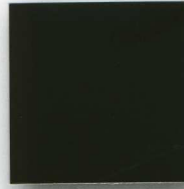
▲ Sandstone



▲ Granite



▲ Medium Bronze



▲ Dark Bronze



▲ Mansard Brown



▲ Sierra Tan



▲ Terra Cotta



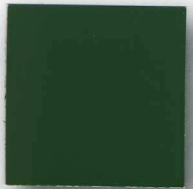
▲ Colonial Red



▲ Cardinal Red



Burgundy



▲ Evergreen



▲ Patina Green



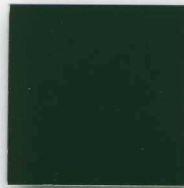
Arcadia Green



▲ Hemlock Green



▲ Teal



Hartford Green



▲ Hunter Green



Berkshire Blue



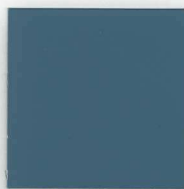
Award Blue



Interstate Blue



▲ Slate Blue



▲ Military Blue



Forest Green



●▲ Zinc



●▲ Silver



●▲ Copper Penny



●▲ Aged Copper



●▲ Champagne



●▲ Weathered Zinc

▲ TremLock® Cool Colors

● TremLock® Metallic Colors

*TremLock® Series II Metallic finishes are available from stock at a moderate extra cost. TremLock® Copper Penny is a Non-Weathering finish.
*Chips represent colors on 24 ga. galvanized steel. Consult actual samples for these colors on aluminum sheet.

TremLock Color Availability

● Denotes available from stock. ★ Indicates low gloss/low sheen formulation.

TremLock® Cool Colors	Reflectivity Emissivity		3 Yr Exposure	SRI*	Steel		Aluminum			
					24 ga.	22 ga.	.032	.040	.050	.063
Almond	0.56	0.89	0.57	66	●		●	●	●	
Bone White	0.73	0.89	0.71	89	●	●	●	●	●	●
Cardinal Red	0.37	0.89	0.38	41	●		●		●	
Charcoal	0.28	0.89		29	●					
Colonial Red	0.32	0.89		34	●		●		●	
Dark Bronze	0.25	0.89		25	●	●		●		●
Evergreen	0.26	0.88		26	●		●			
Granite	0.36	0.89	0.35	40	●*	●	●*		●*	
Hemlock Green	0.30	0.90		32	●	●	●		●	
Hunter Green	0.26	0.88		26	●		●			
Mansard Brown	0.25	0.88		25	●	●	●	●	●	
Medium Bronze	0.27	0.90		28	●	●	●			
Military Blue	0.34	0.88		36	●		●			
Musket Gray	0.31	0.89		33	●	●	●		●	
Patina Green	0.34	0.89		37	●		●			
Sandstone	0.53	0.89	0.49	62	●	●	●	●	●	●
Sierra Tan	0.36	0.89	0.35	40	●		●	●	●	
Slate Blue	0.26	0.87		26	●		●			
Slate Gray	0.36	0.89		40	●	●	●	●	●	
Stone White	0.64	0.88	0.59	77	●	●	●	●	●	
Teal	0.30	0.88		31	●		●			
Terra Cotta	0.36	0.89	0.37	40	●		●		●	
Matte Black**	0.25	0.85		23	●		●	●	●	●
TremLock® Metallic										
Aged Copper	0.28	0.89		29	●		●		●	
Champagne	0.41	0.80	0.40	43	●		●		●	
Copper Penny	0.49	0.87	0.47	56	●		●		●	
Silver	0.60	0.83	0.55	70	●		●	●	●	
Weathered Zinc	0.30	0.81		28	●		●		●	
Zinc	0.32	0.89	0.31	34	●		●		●	
TremLock® Standard Colors (do not meet cool roof requirements)										
Arcadia Green					●		●			
Award Blue					●		●		●	
Berkshire Blue					●*					
Burgundy					●		●		●	
Forest Green					●	●		●	●	
Hartford Green					●		●	●	●	
Interstate Blue					●		●		●	

TremLock® Metallic finishes are available from stock at a moderate extra cost. Tremlock® Copper Penny is a Non-Weathering finish.

*Solar Reflectance Index calculated according to ASTM E-1980. **Matte Black (SRI Color) in steel only.

Energystar® Performance Criteria

Emissivity uses ASTM C1371/E408. Reflectivity uses ASTM E903/C1549.

Installation

TremLock® Series II can be cut, formed, nailed, screwed, or riveted using hand or power tools. Fabricate and install in accordance with drawings and normal sheet metal practices using hand or power tools. Keep cutting edges sharp, clean, and properly aligned. Exercise care during fabrication and installation to avoid damage.

Maintenance

Maintenance is not required. This finish is a member of the Teflon® family, and is self-cleaning. If cleaning is desired, it can be washed with a mild soap and water followed by a clean-water rinse.

Samples

These color reproductions are as accurate as modern printing technology will permit. Free material samples are available on request.

Textures

TremLock® is available with a smooth texture or a standard E-5 stucco embossed pattern, available at extra cost.

Low Gloss/Low Sheen

This finish is a full Kynar 500®/Hylar 5000® finish, but is formulated in a low gloss/low sheen in order to minimize the appearance of oil-canning.

Technical Data for Kynar 500®/Hylar 5000® Coating

•Life Expectancy—20 years exposure - Chalk: rating of 8 or better. Color: $\leq 5\Delta E$ (Hunter Units) change.

•Accelerated Weathering—(ASTM G-23 Type EH) 5,000 hours - Chalk: rating of 8 or better. Color: $\leq 5\Delta E$ (Hunter Units) color change.

•Humidity Resistance—(ASTM 2247) 2,000 hours - No change in pencil hardness.

•Salt Spray Resistance—(ASTM B 117) - 2,000 hours for Aluminum, creepage at scribe $\leq 1/32"$, no blisters. 2,000 hours for hot dipped Galvanized, creepage at scribe $1/8"$, few #8 blisters.

•Chemical/Acid Pollution Resistance—(ASTM D 1808) - Pass.

•Solvent Resistance—(NCCA procedure 11-18, no comparable ASTM test) - Pass.

•Formability—(ASTM D 3281 and ASTM D 1737) - Can be formed without film fracture using normal metal shop practices to a 1 to 2-T bend radius

•Hardness—(ASTM D 3363) - $\geq F$ pencil hardness.

•Gloss— 30 ± 5 at 60° (low gloss/sheen available).

•Abrasion Resistance—(ASTM D 968) - Coefficient of 65 ± 10 .

•Adhesion—(ASTM D 3359 and NCCA procedure No. 11-5) - Pass.

•Impact Resistance—(ASTM D 2794 and NCCA Technical Bulletin No. 11-6) - 70 inch/lbs., no tape pick-off.

Recycled Content

- TremLock Aluminum - 91%
- TremLock Steel - 28 to 35%

TREMCO

Tremco Incorporated
3735 Green Road
Beachwood, OH 44122
1-800-562-2728
www.tremcoroofing.com

TremLock® is a registered trademark of Tremco Incorporated, Kynar 500® is a registered trademark of Eli Atochem North America, Inc. Hylar 5000® is a registered trademark of Ausimont USA.
10/2005