

Eligible for a  
**Federal Solar  
Tax Credit**  
off product and  
installation

# Self-Flashed Solar Powered "Fresh Air" Skylight

The VELUX Solar Powered Self-Flashed "Fresh Air" Skylight is powered by a factory-installed, solar-charged battery pack, which you control with a wireless remote. Its rain sensor signals the skylight to automatically close in damp weather to protect the room below. Available in custom sizes only.

**Ideal Applications:**  
Out of reach **kitchens** and **bathrooms** for optimal natural ventilation.



## FEATURES & BENEFITS

- Solar-powered to effortlessly open and close your skylight without electricity, circulating fresh air throughout your home
- Acoustic rain sensor closes skylight at the first sign of rain
- Pairs with VELUX ACTIVE for total skylight control and custom climate automation through your smartphone
- Eligible for Federal Solar Tax Credit\*

## PRODUCT DETAILS

- **Laminated LoE3 Glass:** double-paned argon-gas-filled LoE3 glass that provides excellent energy performance for year round comfort. Plus, it includes the added safety of laminated glass, which building codes require for out-of-reach applications.
- Insect Screen
- One-piece, impenetrable ultra-seal integrated flashing
- No sealants required

## OPTIONAL SKYLIGHT UPGRADES

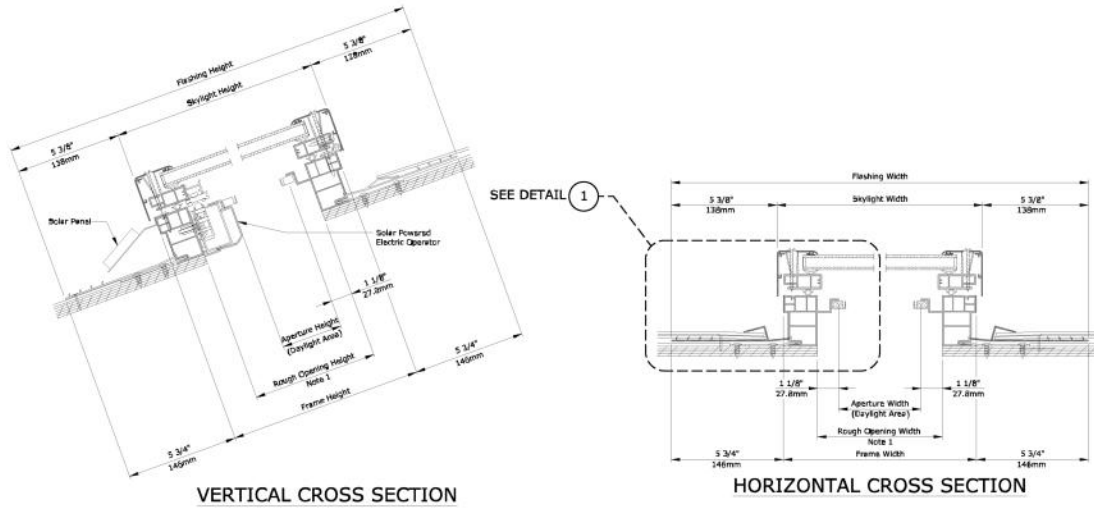
- Impact Glass
- White Laminated Glass
- Custom Color Finishes

## ACCESSORIES

- Factory pre-installed Room-Darkening or Light Filtering shades
- VELUX ACTIVE with NETATMO

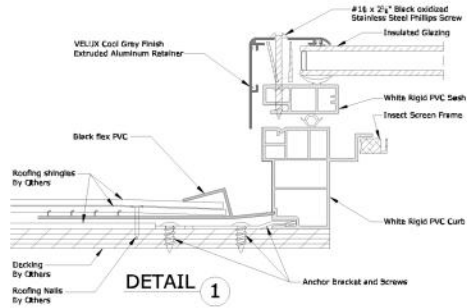


## Self-Flashed Solar Powered "Fresh Air" Skylight



VERTICAL CROSS SECTION

HORIZONTAL CROSS SECTION



DETAIL 1

### COMPLIANCE AND CERTIFICATIONS

- Energy Star

|                      |            | 2222   | 2230   | 2238   | 2246   | 2254   | 3030   | 3046   | 3054   | 4646   |
|----------------------|------------|--------|--------|--------|--------|--------|--------|--------|--------|--------|
| Rough Opening Width  | (W-in.)    | 22 1/2 | 22 1/2 | 22 1/2 | 22 1/2 | 22 1/2 | 30 1/2 | 30 1/2 | 30 1/2 | 46 1/2 |
| Rough Opening Height | (H-in.)    | 22 1/2 | 30 1/2 | 38 1/2 | 46 1/2 | 54 1/2 | 30 1/2 | 46 1/2 | 54 1/2 | 46 1/2 |
| Daylight Area        | (Sq. Feet) | 2.71   | 3.83   | 5.10   | 6.08   | 7.21   | 5.35   | 8.49   | 10.06  | 13.29  |