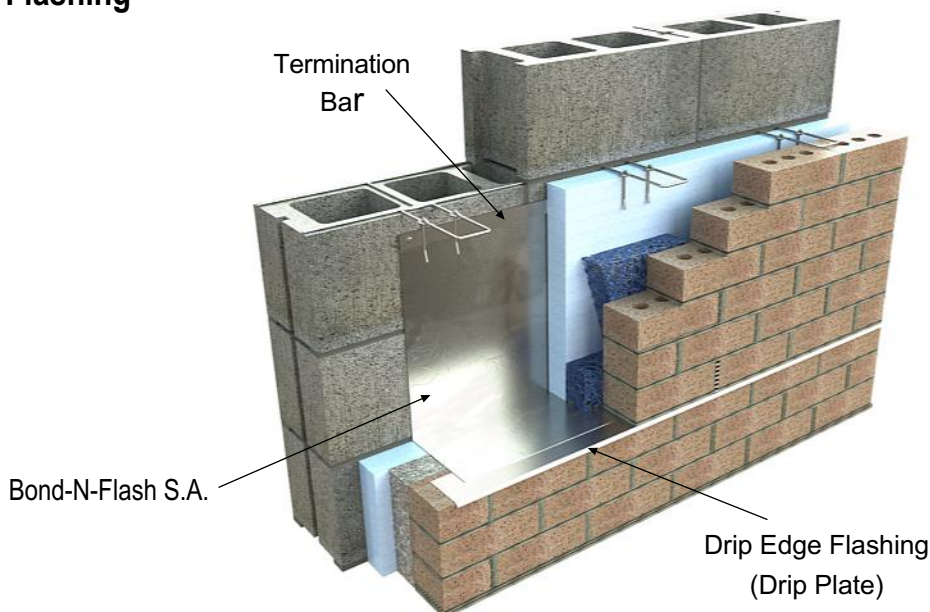
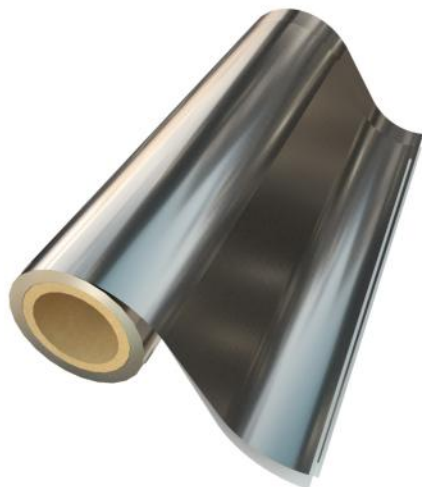


PRODUCT SUBMITTAL



4160 BOND-N-FLASH S.A. Self-Adhering 304 Stainless Steel Flashing



Note: A Termination Bar is required for surface-mounted applications.

Description:

BOND-N-FLASH S.A. stainless steel composite flashing consists of 2 mils of stainless steel (type 304) bonded to a permanent clear (PSA) adhesive with a removable silicone coated release liner. BOND-N-FLASH S.A. is a self-adhering primer-less flashing which can be applied from 20 Degrees F to 180 Degrees F. BOND-N-FLASH S.A. is a primer-less product requiring only the use of **QUIK SET Mastic** for seams and laps.

Technical Data:

Property	Avg. Values	Test Method
Puncture	2,500 psi	ASTM E154
Tensile Strength	100,000 pas	ASTM D882
Fire Resistance	Class A, Pass	ASTM E84
Mold Resistance	Pass	ASTM 3273
Adhesion	20 lbs/psi	PSTC - 1.1
Stainless Steel certified to meet:		ASTM A240/A240M

Features and Benefits:

- No Primer Needed
- 304 Stainless Steel
- Permanent Adhesive
- Permanent UV Resistance
- Fire Resistant
- Mold Resistance
- High Puncture and Tear Resistance
- Flexible for easy job site formation
- Life of the wall warranty

LEED – EA credit 1 and EQ credit 4.1

BOND-N-FLASH S.A. is compatible with most of the insulations, air barriers, roofing membranes, asphaltic flashings and below grade waterproofing products.

Applications:

- Thru-Wall Flashing
- Head and Sill Flashing
- Spandrel Flashing
- Roof-Parapet Flashing
- Perimeter Flashing-Curtain Wall
- Base Flashing
- Transition Membrane (Waterproofing, Roofing, Air Barriers)

BOND-N-FLASH S.A.

Weight: 2 mils of stainless steel (type 304) bonded to a permanent clear (PSA) adhesive with a removable silicone coated release liner. Total Thickness: 12 mils.

Width: 12" 18" 24" (75 lf rolls)

Accessories:

- #4198 Quick Set Sealant - 28 oz. cartridge (**Required**)
- #4161W Bond -N- Flash Primer (Water Based) - 5 gallon pail
- #4161S Bond -N- Flash Primer Solvent Based (Winter Grade) - 5 gallon pail

Termination Bar (Required):

- #4200 Stainless Steel #4200 PVC
- #4210 Stainless Steel with Flange Top for Sealant

Stainless Steel Corners & End Dams:

- #4194 End Dam Stainless Steel Flashing
- #4196 Inside Corner Stainless Steel Flashing
- #4196 Outside Corner Stainless Steel Flashing

Drip Edge Plate Flashing: 3" width 1-1/2" width

- #4165 Drip Edge Flashing Stainless Steel (8'-0")
- #4166 Inside Drip Edge Corner Stainless Steel Flashing
- #4166 Outside Drip Edge Corner Stainless Steel Flashing

Weeps & Vents: #3601 Cell Vent #3603 Clear Rectangular Vent
 #3602 Louvered Weephole

Mortar Suspension: #3611D Cavity Net DT 1" #3611D Cavity Net DT 2"

Corporate Office: 400 Rountree Rd Charlotte, NC 28217
TEL: (800) 849-6722 FAX: (704) 525-3761

Mailing Address: P.O. Box 240988 Charlotte, NC 28224



www.wirebond.com

Memphis Plant: 2365 Harbor Ave. Memphis, TN 38113
TEL: (800) 441-8359 FAX: (901) 775-9449

Mailing Address: P.O. Box 13124 Memphis, TN 38113