



INSTALLATION GUIDELINES MEL-ROL®

This document has been created as an addendum to the MEL-ROL technical data sheet to provide the recommended procedure to use when installing MEL-ROL self-adhesive waterproofing membrane from W. R. MEADOWS. The guide will cover recommended tools to use, surface preparation prior to membrane installation, and the membrane installation on both vertical and horizontal surfaces.

TOOLS RECOMMENDED

- Utility knife
- Chalk line
- Stiff bristle broom
- 6' (1.8 m) broom handle or equivalent
- 1.5" (38.1 mm) or 2" (50.8 mm) margin trowel
- Medium nap (3/8" - 1/2") lambswool paint roller
- Tape measurer
- Gloves (solvent-resistant)
- Screwdriver
- Small diamond point trowel
- 35 lb. or heavier linoleum roller
- Hammer
- Rags
- Cleanup solvent similar to xylene or toluene or SEALTIGHT CLEANER or SEALTIGHT SOLVENT from W. R. MEADOWS

The above tools are enough to perform a proper installation; however, more tools may be used.

W. R. MEADOWS MATERIALS NEEDED

- MEL-ROL self-adhesive waterproofing membrane
- MEL-PRIME, MEL-PRIME N.E., or MEL-PRIME W/B adhesive
- DETAIL STRIP
- POINTING MASTIC
- BEM
- PC protection board and/or MEL-DRAIN drainage board
- MEADOW-CRETE GPS
- MEADOW-PATCH 20



SURFACE PREPARATION

Concrete should be cured at least 72 hours, must be clean, dry, smooth, and free of any curing compounds, release agents, contaminants and voids. Repair spalled, damaged, poorly compacted concrete and fill all voids exceeding 1/4" in width with MEADOW-PATCH 20 or MEADOW-PATCH T1 and trowel smooth. Remove all sharp protrusions by grinding or chipping. Repair chipped areas, if necessary, per the above. Apply when the air and surface temperature are above 40° F (4° C). Do not apply to frozen concrete. MEL-ROL LOW TEMP or XLT can be used when air and surface temperatures are between 0° F (-18° C) and 60° F (16° C).

MEL-ROL can be applied to concrete, masonry surfaces, wood, insulated wall systems, and metal. All substrates must be clean, dry, and free of all surface irregularities.

Masonry walls may require the application of a cementitious parge-coat. Parge the wall using MEADOW-PATCH T1 or MEADOW-PATCH SMOOTH GRADE. Allow the parge-coat to dry, usually 12 hours at 75F before priming with the



W. R. MEADOWS, INC. | P.O. Box 338 | HAMPSHIRE, IL 60140-0338
Phone: 847/214-2100 | Fax: 847/683-4544 | www.wrmeadows.com



INSTALLATION GUIDELINES MEL-ROL®

appropriate W.R. MEADOWS MEL-PRIME or MEL-PRIME WB. Always use MEL-PRIME WB when priming insulated concrete forms. When applied, the parge-coat will produce a smooth, uniform, and well-bonded surface. Apply MEL-PRIME to all areas to receive MEL-ROL.

PRIMING

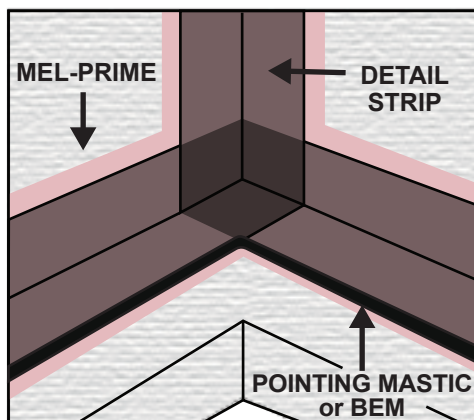
Apply the appropriate W.R. MEADOWS Primer at the specified coverage rate. Apply using a medium nap roller brush. Allow primer to dry for a minimum of 30 minutes at 75F. Colder temperatures will delay dry time. Allow the primer to dry to a tacky surface prior to installation of the MEL-ROL.

Apply MEL-PRIME adhesive to surfaces that will be covered within one working day. If left exposed overnight, additional adhesive must be applied. Follow all instructions and precautions on W. R. MEADOWS PRIMER container.

DETAILING

INSIDE CORNERS

Before MEL-ROL is applied, place a vertical DETAIL STRIP on inside corners extending the material 4 ½" (114.3 mm) beyond each side of the corner. Terminate at the footing and finish the corner with POINTING MASTIC or BEM.



W. R. MEADOWS, INC. | P.O. Box 338 | HAMPSHIRE, IL 60140-0338
Phone: 847/214-2100 | Fax: 847/683-4544 | www.wrmeadows.com

OUTSIDE CORNERS

Bend DETAIL STRIP vertically over the outside corner and extend 4 ½" (114.3 mm) beyond each side of the corner. Terminate the material at the footing. Finish the corner with POINTING MASTIC or BEM.

DRAINS AND PROTRUSIONS

All protrusions should be sealed by forming a collar of MEL-ROL or DETAIL STRIP applied at least 6" (152.4 mm) in all directions. Seal all terminations with POINTING MASTIC or BEM. Around drains, apply in the same method and put a bead of POINTING MASTIC or BEM between the membrane and clamping rings at all terminations, drains, and protrusions.



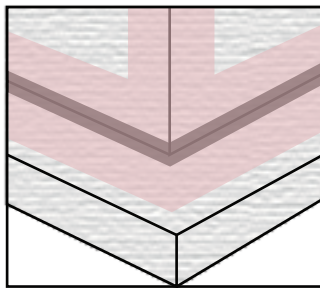
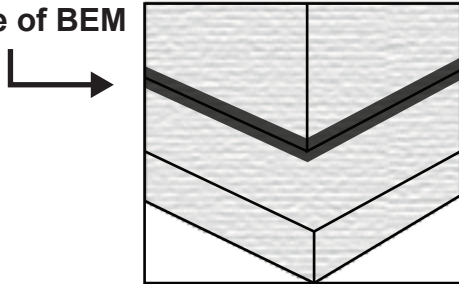
FOOTING DETAILS

Fill 90° interior angles with a cove of BEM. Apply MEL-PRIME in all the inside and outside corners prior to installing DETAIL STRIP. Install DETAIL STRIP 4 ½" (114.3 mm) up the wall and 4 ½" (114.3 mm) on the footing. Extend the material 4 ½" (114.3 mm) beyond outside corners. Slit extended portion of DETAIL STRIP lengthwise. Place the horizontal flap out onto the footing and bend the vertical flap around the wall. Repeat this procedure in the opposite direction. Apply a bead of POINTING MASTIC or BEM on the exposed edge of installed DETAIL STRIP at footing. Please note: use POINTING MASTIC in place of BEM when using MEL-ROL XLT.



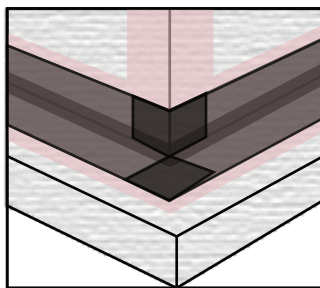
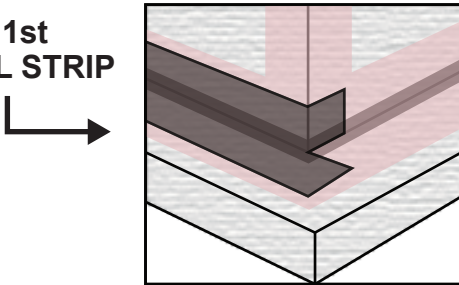
INSTALLATION GUIDELINES MEL-ROL®

1. Cove of BEM



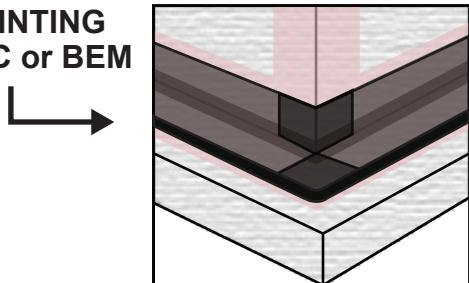
2. MEL-PRIME

3. 1st DETAIL STRIP



4. 2nd DETAIL STRIP

5. POINTING MASTIC or BEM



VERTICAL WALL APPLICATION

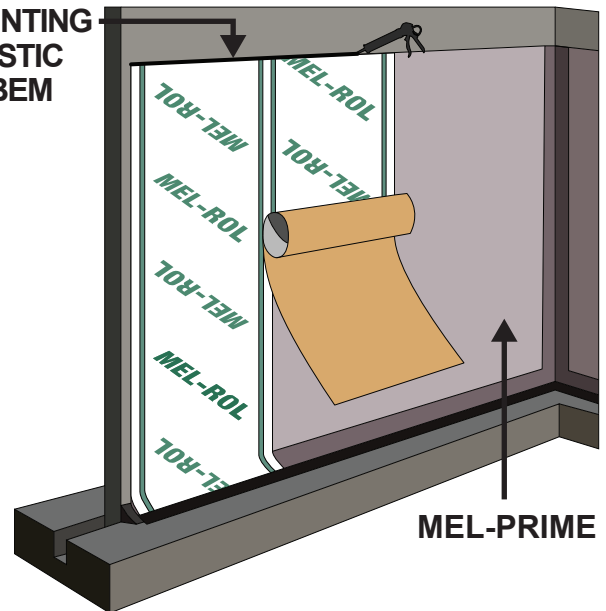
Remove the release paper, then apply vertically in lengths approximately 8' (2.44 m) long over the top of the horizontal DETAIL STRIP at the footing. Overlap the seams at least 2 1/2" (63.5 mm). Tightly butt edges of membrane and apply POINTING MASTIC or BEM in corner applications.

To aid in a proper overlap, position the membrane so that it covers the "W. R. MEADOWS" wording running along the edge.

Apply POINTING MASTIC or BEM to the top terminations at least 1/8" (3.18 mm) thick and 1" (25.4 mm) wide. As an option, TERMINATION BAR may be used to fasten and membrane mechanically.

Once positioned, immediately hand-rub the MEL-ROL membrane firmly to the surface removing any bubbles or wrinkles, then pressure roll the complete surface to assure positive adhesion. Apply POINTING MASTIC or BEM to the leading edge of the membrane at the end of each working day.

POINTING MASTIC or BEM





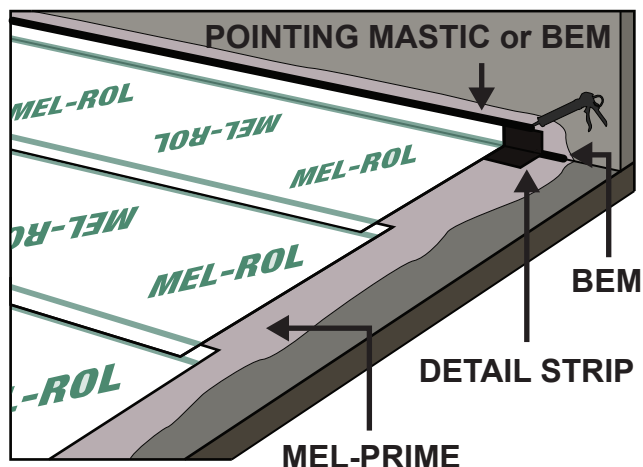
INSTALLATION GUIDELINES MEL-ROL®

HORIZONTAL APPLICATION

Remove the release paper on the edge, then position the MEL-ROL membrane. Pull the balance of the release paper off, running the roll from low to high points so that all the laps will shed water. Stagger end laps and overlap all seams at least 2 ½" (63.5 mm). All terminations of MEL-ROL must be detailed with a bead of POINTING MASTIC or BEM. Apply a double-thickness of the MEL-ROL membrane over construction, control, and all expansion joints and cracks greater than 1/16" (1.59 mm) wide.

Once positioned, immediately hand-rub the MEL-ROL membrane firmly to the surface removing any bubbles or wrinkles. Roll entire membrane and laps with a hard rubber hand roller to assure positive adhesion.

A thorough inspection should be made before covering and all necessary repairs made immediately. Tears and inadequate overlaps should be covered with MEL-ROL. Slit fish mouths and patch. If flooding test is required, allow a minimum of 24 hours following the membrane installation. Flood testing should be performed accordingly to ASTM D5957.



INSPECT AND REPAIR

A thorough inspection should be made before covering and all necessary repairs made immediately. Tears and inadequate overlaps should be covered with MEL-ROL. Slit fish mouths and patch. Seal edges of all patches with POINTING MASTIC or BEM. Where applicable, horizontal applications can be flood-tested for 24 hours. All leaks should be marked and repaired when membrane dries.

PROTECT THE MEMBRANE

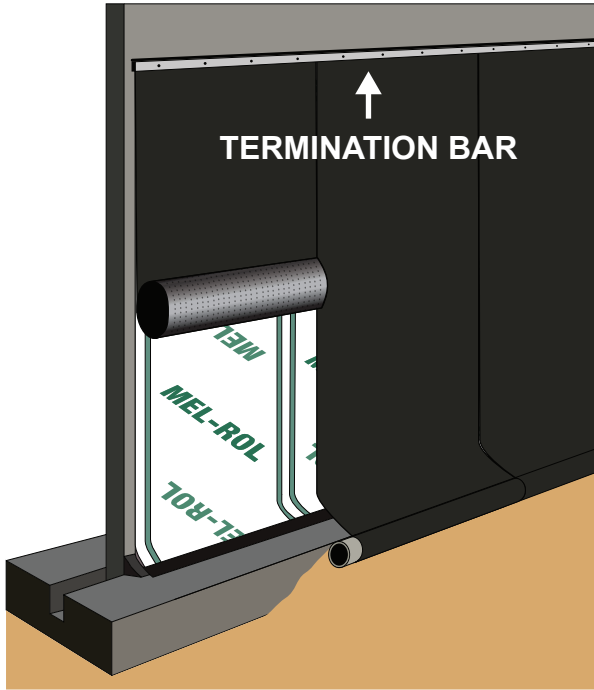
Immediately apply PROTECTION COURSE on all vertical and horizontal installations if no drainage system is used, or apply MEL-DRAIN. To secure PROTECTION COURSE, use POINTING MASTIC or BEM as an adhesive, and/or physically attach at the top edge using TERMINATION BAR.

When using MEL-DRAIN on a vertical wall application, align the first roll and mechanically fasten in place. Roll MEL-DRAIN down the wall, overlapping the footing. Continue MEL-DRAIN installation to cover installed MEL-ROL. Pull away the fabric layer of MEL-DRAIN to expose dimples. Install drainage tile and wrap excess fabric over the drainage tile. Install TERMINATION BAR and fasted at 12" on center to hold MEL-DRAIN in place and apply a bead of POINTING MASTIC or BEM on the top edge of the TERMINATION BAR.





INSTALLATION GUIDELINES MEL-ROL®



Backfilling should be done immediately, using care and caution to avoid damaging the waterproofing application.

PRECAUTIONS

Not recommended as a pond or tank liner. MEL-ROL is not compatible with coal tar, polysulfides, polyurethanes, pitches, soft PVC and most polyether. The membrane should not be left exposed to direct sunlight for longer than 45 days. The use of MEL-ROL does not negate the need for relief of hydrostatic heads. A complete drain tile system should be placed around the exterior of footings and under slabs, as required.



W. R. MEADOWS, INC. | P.O. Box 338 | HAMPSHIRE, IL 60140-0338
Phone: 847/214-2100 | Fax: 847/683-4544 | www.wrmeadows.com